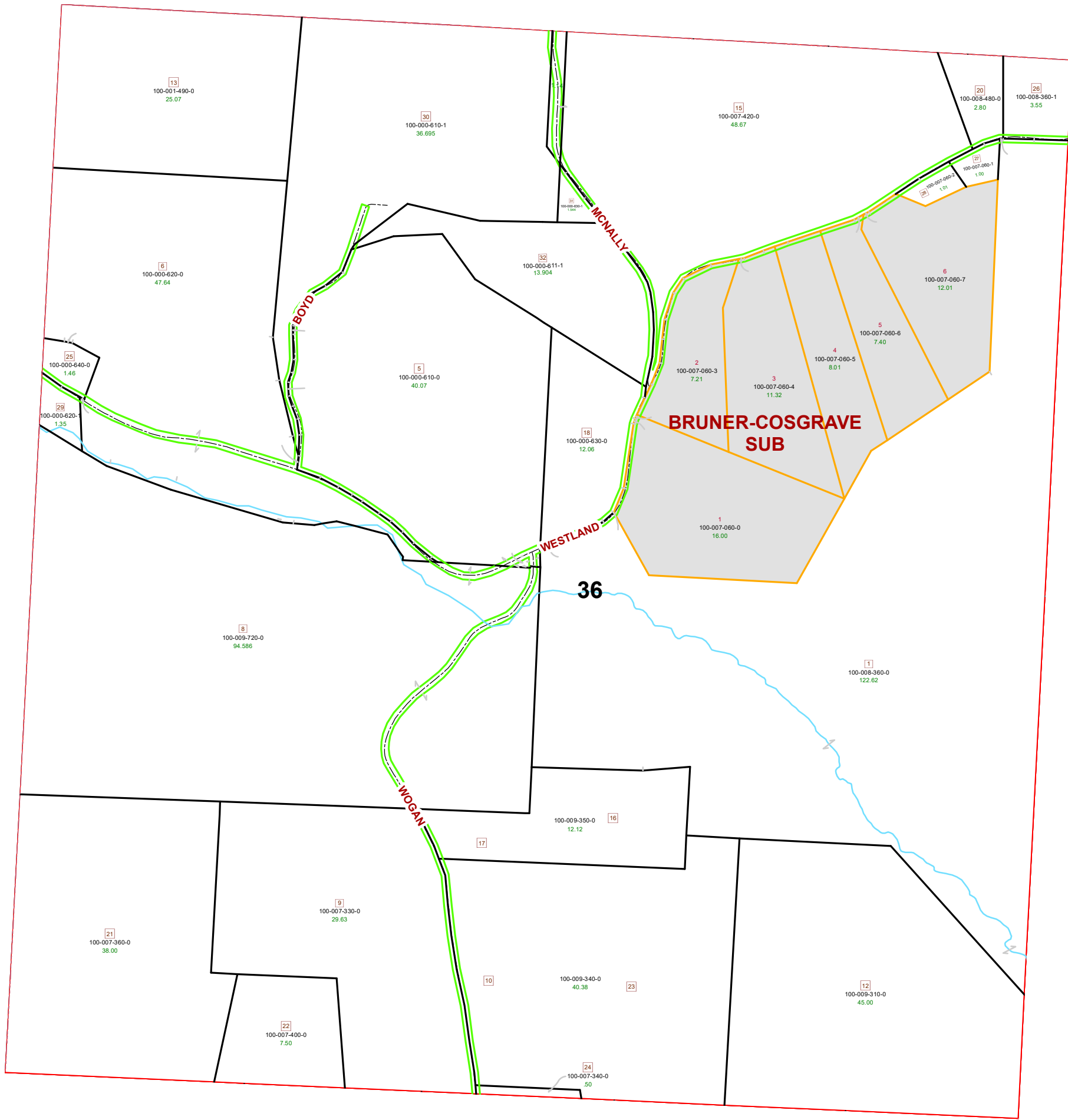
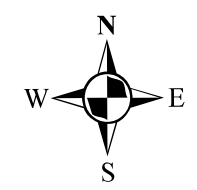


MARION TOWNSHIP SECTION 36 R12 TWP 8 MORGAN COUNTY, OH

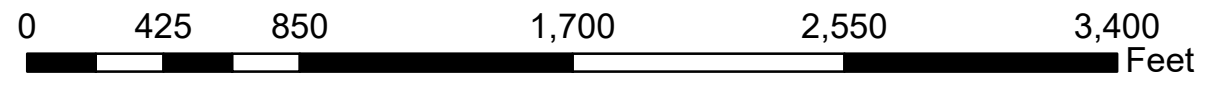


PIN	Owner	VOL	PAGE	LegalDescr	Acres
100-007-420-0	BIRO TERRY & NICOLE	OR232	3910	R12 T08 S36 SD 15 SU	48.67
100-007-420-0	BIRO TERRY & NICOLE	OR232	2798	R12 T08 S36 SD 15 SU	48.67
100-000-610-1	BOYD RUSSELL L	OR120	183	R12 T08 S36 SD 30	36.695
100-000-630-1	BOYD RUSSELL L	OR120	166	R12 T08 S36 SD 31	1.544
100-000-620-1	BOYD WILLIAM E & DIANA S	OR120	183	R12 T08 S36 SD 29 SU	1.355
100-000-640-0	BOYD WILLIAM E & DIANA S	OR120	183	R12 T08 S36 SD 25 SU	1.46
100-000-620-0	BOYD WILLIAM E & DIANA S	OR120	164	R12 T08 S36 SD 6 SUR	47.643
100-007-060-1	COOK JENNIE	OR176	470	R12 T08 S36 SD 27	1
100-008-360-1	FUSSNER JACOB W	OR110	380	R12 T08 S36 SD 26	3.55
100-008-360-0	GOSHEN RUN FARMS LLC	OR214	1287	R12 T08 S36 SD 1	122.628
100-009-720-0	GOSHEN RUN FARMS LLC	OR231	4232	R12 T08 S36 SD 8	94.586
100-000-630-0	GOSHEN RUN FARMS LLC	OR230	3269	R12 T08 S36 SD 18	12.067
100-000-610-0	GOSHEN RUN FARMS LLC	OR230	3308	R12 T08 S36 SD 5	40.076
100-000-611-1	GOSHEN RUN FARMS LLC	OR233	2680	R12 T8 S36 SD32	13.904
100-007-060-7	GOSHEN RUN FARMS, LLC	OR227	3142	R12 T08 S36 LOT 6 BR	12.013
100-001-490-0	JANSON GREGORY R & KATHERINE A	OR78	266	R12 T08 S36 SD 13 SU	25.07
100-007-060-2	KILGORE RICHARD E	OR220	478	R12 T08 S36 SD 28	1.013
100-007-340-0	PEPPER MATTHEW JAMES & JULIE NELSON-PEP	OR103	544	R12 T08 S36 SD 24 SU	0.5
100-007-400-0	PEPPER MATTHEW JAMES & JULIE NELSON-PEP	OR103	544	R12 T08 S36 SD 22 SU	7.5
100-007-330-0	PEPPER MATTHEW JAMES & JULIE NELSON-PEP	OR103	544	R12 T08 S36 SD 9 SUR	29.63
100-007-360-0	PEPPER MATTHEW JAMES & JULIE NELSON-PEP	OR103	544	R12 T08 S36 SD 21 SU	38
100-008-480-0	THE BIRO FAMILY REVOCABLE TRUST	OR229	1300	R12 T08 S36 SD 20 SU	2.8
100-009-310-0	WELLS MINNIE	OR218	371	R12 T08 S36 SD 12	45
100-009-340-0	WELLS MINNIE	OR218	371	R12 T08 S36 SD 10-13	40.38
100-009-350-0	WELLS MINNIE	OR218	371	R12 T08 S36 SD 16-17	12.12



Boundaries	
----- Hidden	--- ROW
----- Hydro	--- Section
----- Roads	--- Lot
----- County	--- Township
----- Parcel	--- Parcels

Source: Morgan County Engineer's Office
 Author: Marcia Wolfe
 Date: 7/16/2020



Disclaimer: The information that these maps contains is for reference purposes only. Please bring any errors to the attention of the Engineer's Office staff.
 Thank you